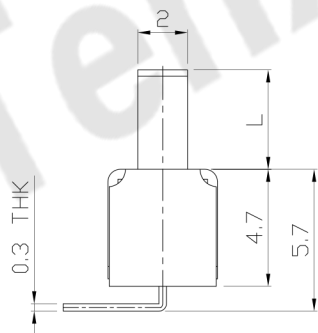
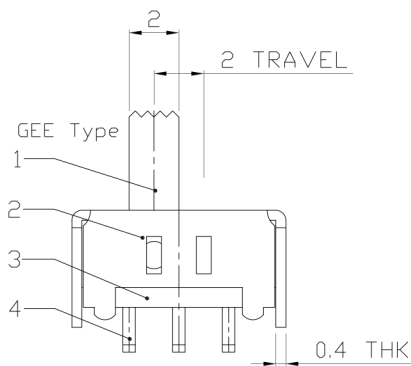
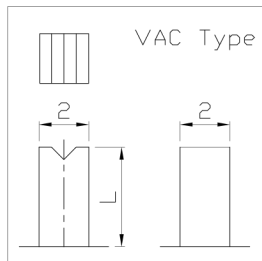
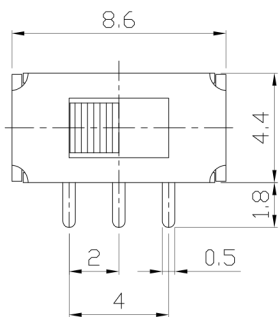




RoHS  
Compliant  
2002/95/EC

### DIMENSIONS

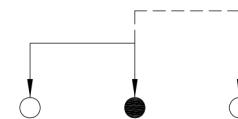
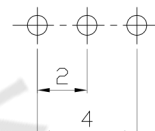


### MODEL CODE

SS-12D13- GEE

Knob Type
GEE
VAC

L(mm)
~



P.C.B LAYOUT  
BOTTOM VIEW

CIRCUIT DIAGRAM

### ELECTRO-MECHANICAL CHARACTERISTICS

Refer to additional specifications

RATING	0.3A 50V DC
CIRCUIT	1P2T
CONTACT RESISTANCE	100mΩ MAX.
TIMING	NON-SHORTING
TRAVEL	2mm
OPERATING FORCE	250±100gf
OPERATING LIFE(cycles)	10,000

NO.	PARTS	MATERIAL	Q'TY	FINISHING
8				
7				
6	SPRING PLATE	PBS STRIP	1	NATURAL
5	CONTACT CLIP	PBS STRIP	1	Ag CLAD
4	TERMINAL	BRASS STRIP	3	Ag CLAD
3	BASE	PHENOLIC RESIN	1	NATURAL
2	FRAME	STEEL STRIP	1	Ni PLATED
1	KNOB	POM	1	BLACK
NO.	PARTS	MATERIAL	Q'TY	FINISHING

THESE DRAWINGS AND SPECIFICATIONS ARE THE PROPERTY OF ACCURATE INNO TECH INC AND SHALL NOT BE REPRODUCED, COPIED OR USED IN ANY MANNER WITHOUT THE PRIOR WRITTEN CONSENT OF ACCURATE INNO TECH INC.

WITHIN 1.5mm: ±0.1mm	UNITS mm	东莞市腾兴电子有限公司			
OVER 1.5mm: ±0.2mm	MAT'L				
	SEE NOTE	TITLE: SLIDE SWITCH / VERTICAL	PART NO.: SS-12D13		
	FINISH	DR: Ricky 2015/07/07	DWG NO.: ADL-12D13		
	SEE NOTE	CHKD: Ricky 2015/07/07	SCALE	SHEET	REV.
	Q'TY	APPD:	4:1	1/1	A
					CUSTOMER DRAWING