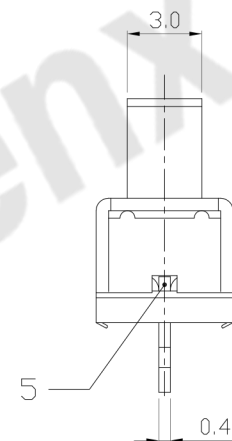
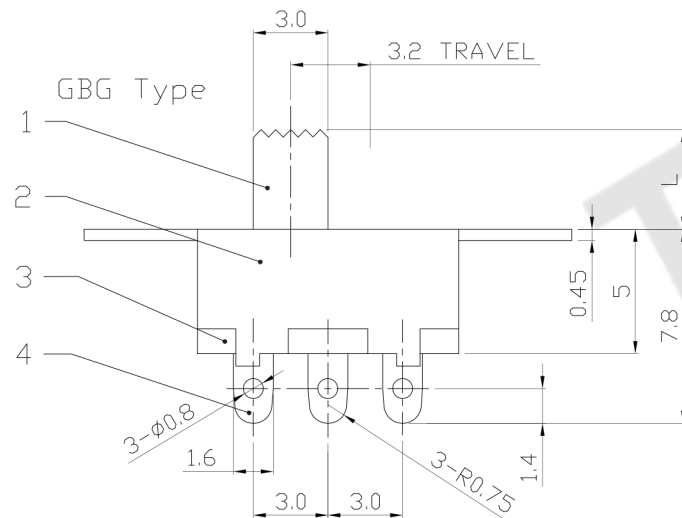
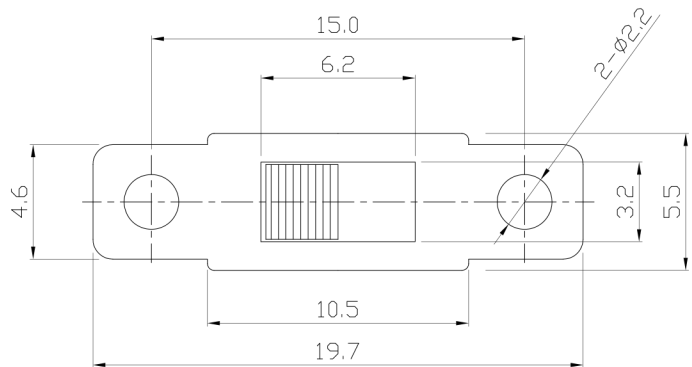




RoHS  
Compliant  
2002/95/EC

REV.	ECN. NO.	APPD.

### DIMENSIONS

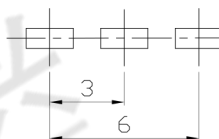


### MODEL CODE

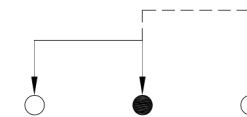
SS-12F15-GBG

Knob Type  
GBG

L(mm)  
~



P.C.B LAYOUT  
BOTTOM VIEW



CIRCUIT DIAGRAM

### ELECTRO-MECHANICAL CHARACTERISTICS

Refer to additional specifications

RATING	0.5A 50V DC
CIRCUIT	1P2T
CONTACT RESISTANCE	30mΩ MAX.
TIMING	NON-SHORTING
TRAVEL	3.2mm
OPERATING FORCE	200±100gf
OPERATING LIFE(cycles)	10,000

8					
7					
6	SPRING	SUS WIRE	1	NATURAL	
5	CONTACT PLATE	BRASS STRIP	1	Ag PLATED	
4	TERMINAL	BRASS	3	Ag PLATED	
3	TERMINAL BASE	PHENOLIC RESIN	1	NATURAL	
2	FRAME	STEEL STRIP	1	BLACK	
1	KNOB	POM	1	BLACK	
NO.	PARTS	MATERIAL	Q'TY	FINISHING	

WITHIN 1.5mm: ±0.1mm	UNITS mm
OVER 1.5mm: ±0.2mm	MAT'L
	SEE NOTE
	FINISH
	SEE NOTE
	Q'TY

<b>东莞市腾兴电子有限公司</b>			
TITLE:	SLIDE SWITCH / VERTICAL	PART NO.:	SS-12F15
DR:	Ricky 2016/08/05	DWG NO.:	AZJ-12F15
CHKD:	Ricky 2016/08/05	SCALE	SHEET
APPD:		3:1	1/1
		REV.	A
		CUSTOMER	DRAWING

THESE DRAWINGS AND SPECIFICATIONS ARE THE PROPERTY OF ACCURATE INNOVATECH INC AND SHALL NOT BE REPRODUCED, COPIED OR USED IN ANY MANNER WITHOUT THE PRIOR WRITTEN CONSENT OF ACCURATE INNOVATECH INC.