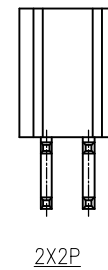
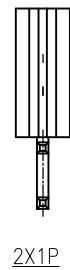
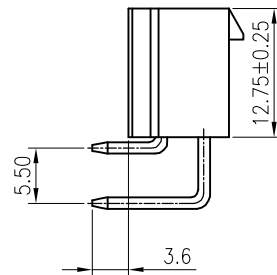
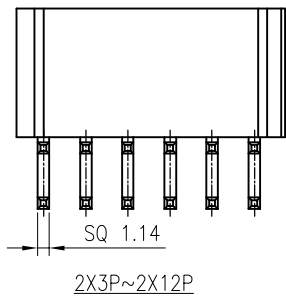


Recommended P.C.Board Layout

◆ SPECIFICATIONS

- Current rating: 9A AC, DC(AWG#16,2 Circuit)
- Voltage rating: 600V AC,DC
- Temperature range: -25°C ~ +85°C
- Insulation resistance: 1000M Ω Min.
- Withstanding voltage: 1500V AC/ minute.
- Contact resistance: 10m Ω Max.

.Material: PIN:Brass/Tin-plated  
Base:Nylon66 UL94V-2  
.Color: Natural



Dimension		
PART NO	A	B
C4200RD20163P64B		5.40
C4200RD20263P64B	4.20	9.60
C4200RD20363P64B	8.40	13.80
C4200RD20463P64B	12.60	18.00
C4200RD20563P64B	16.80	22.20
C4200RD20663P64B	21.00	26.40
C4200RD20763P64B	25.20	30.60
C4200RD20863P64B	29.40	34.80
C4200RD20963P64B	33.60	39.00
C4200RD21063P64B	37.80	43.20
C4200RD21163P64B	42.00	47.40
C4200RD21263P64B	46.20	51.60

④				GENERAL TOLERANCE		UNIT: mm	DATE	TITLE: KR4200 MX 4.2 双排 90度WF实心 无柱			东莞市腾兴电子有限公司		
③				.X ± 0.30	X° ± 1°	DRAWN: 闵昕皓	2016.12.05						
②				.XX ± 0.20	.X° ±	CHECKED:		VER.	SCALE:	N/A	PROJ	PART NO.	C4200RD2**63P64B
①				.XXX ± 0.10	.XX° ±	APPROVED:		A1	SHEET:	1/1	DRAWING NO.	4200WHD201-6-S	
LTR	NAME	DATE	VERISION RECORD										